



# Data Recovery Training

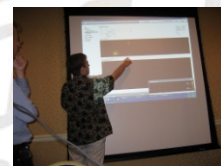
## Monthly Sessions

Join us in Southern California for our monthly Data Recovery Training courses. Sessions will cover in-depth hard drive anatomy, diagnostics, repair, and cleanroom procedures with visual presentations and hands-on learning at every step. All courses will be conducted by the Ji2 Inc. Data Recovery staff. These courses are ideal for small data recovery businesses who are looking to take-on more complex jobs and businesses who are looking to save on costly data recovery service fees by enhancing their in-house recovery capabilities.

- ***2 Full Days of Training***
- ***Hands-On Tutorials***
- ***Hard Drives Provided***
- ***Complementary Tool Set***
- ***Can be used towards CFCE and EnCE recertification requirements***

### **In-Depth Training For:**

- HDD Anatomy
- HDD Diagnosis
- Physical HDD Repair
- Cleanroom Procedures



For further information, contact: **Ji2 Inc.**



[www.Ji2.com](http://www.Ji2.com)

11235 Knott Ave, Suite C  
Cypress, CA 90630  
Tel: (562) 597-1482  
Fax: (714) 895-7300  
e-mail: [info@ji2.com](mailto:info@ji2.com)

# 2010 Data Recovery Training Schedule

August 19-20 September 16-17

October 21-22 November 18-19 December 16-17

**\*Dates Subject to Change**

**\*\*Minimum 2 Attendees per Session**

## Topics Include:

### ✓ Hard Drive Anatomy

HDA Assembly	Firmware Area	PCB Composition
Special Scenarios	Part/Donor Matching	Common Myths

### ✓ Hard Drive Diagnosis, Repair & Recovery

PCB	Head Stack	Motor
Platter	Firmware Area	Logical Structures

### ✓ Hard Drive Imaging, File Recovery, and Data Handling

Imaging Techniques	Imaging Products	Data Delivery Formats
File Recovery	Recovery Products	Error Prevention & Correction

## Terms & Conditions:

### 1) **Minimum 2 Attendees per Session**

Ji2 Inc. reserves the right to cancel any training session up to 1 week before the start of the event if less than 2 clients are registered for attendance.

### 2) **Payment Required in Full Before Start of Training**

Ji2 Inc. reserves the right to deny entry to training course to any attendee who has not paid his/her course fee in full by the start of the training session.

### 3) **Recertification Training Requirements**

Please contact the certification authority prior to taking the course to confirm it may be used towards their recertification training requirements.



**Ji2 Inc.**

11235 Knott Ave, Suite C, Cypress, CA 90630, USA

Phone: (562) 597-1482, Fax: (714) 895-7300, Email: [info@ji2.com](mailto:info@ji2.com)