

ATOLA INSIGHT ETHERNET

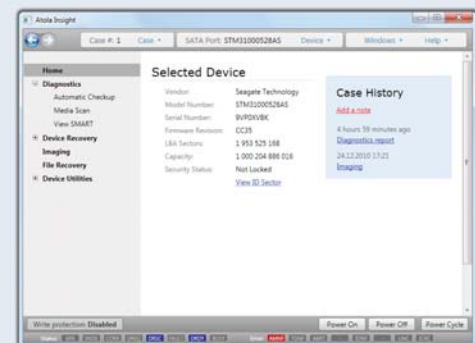
A New All-in-One Data Recovery Tool

The Atola Insight Ethernet is a brand-new data recovery product from **Atola Technology**. It is a full 360 degree solution made by data recovery professionals to address common needs that are not being fulfilled by current data recovery products with new gigabit hardware connection allowing for greater speed.



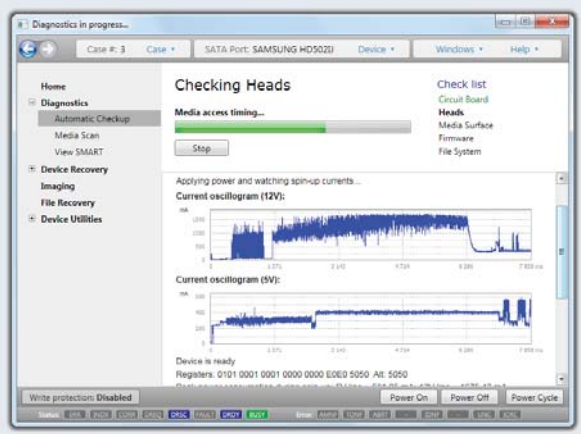
Manages All 4 Stages of Data Recovery

- 1 Hard Drive Diagnosis
- 2 Firmware Repair and Recovery
- 3 Hard Drive Imaging / Duplication
- 4 File Recovery & Extraction





DIAGNOSTIC FUNCTIONS



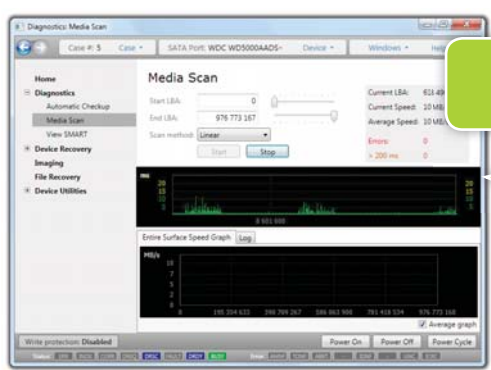
- ▶ Fully automatic disk checkup
- ▶ Media scan
- ▶ S.M.A.R.T. Operations
- ▶ Firmware Area (System Area) Checkup
- ▶ Partitions and File Systems Checkup
- ▶ Head Checkup
- ▶ PCB Checkup
- ▶ **Automatic Reporting System For All Diagnostic Functions**

Fully Automated Diagnosis

Atola Insight automatically diagnoses all components of a hard drive and reports specific problems to the operator along with recommendations for completing data recovery. It also automatically repairs HDD firmware and identifies/removes ATA passwords (User or Master setting at any security level). All automatic functions can be performed manually according to the operators preference.

Media Scan

Media Scan reveals errors such as read delays (bad sectors). Two graphs are created displaying HDD Transfer Speed and Block Read Time. This function identifies surface and head damage on the hard drive.



Block Read Time (Milliseconds)

HDD Transfer Time (MB/sec)

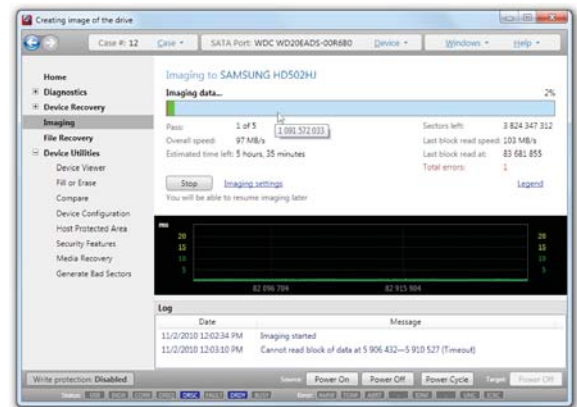




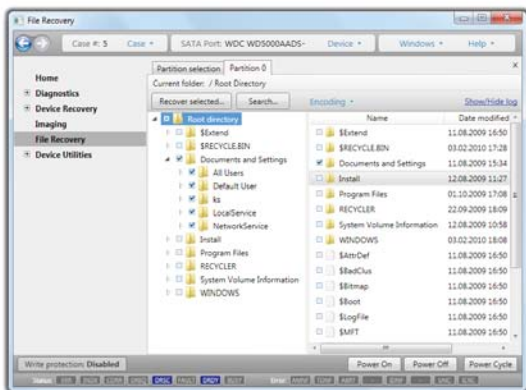
HDD DUPLICATION

The Atola Insight's Disk Duplication function enables the user to create precise copies of hard drives with plenty of options for flexibility in various data recovery applications.

- Imaging speed up to 100 MB/s
- Duplication using multiple passes
- Duplication by specified heads
- "Data only" copy option
- Stop/resume anytime support
- Checksum calculation



FILE RECOVERY (FAT16, FAT32, NTFS, EXT2, EXT3, EXT4, HFS, HFS+)



The Atola Insight File Recovery Engine extracts files from badly damaged hard drives, even in cases where all partitions are lost. It does this by scanning a hard drive's entire platter area to identify possible system file structures (such as MFT) and then recovering the original file and folder structures. Operation automatically applies identification methods such as file signature scanning.

PASSWORD RECOVERY

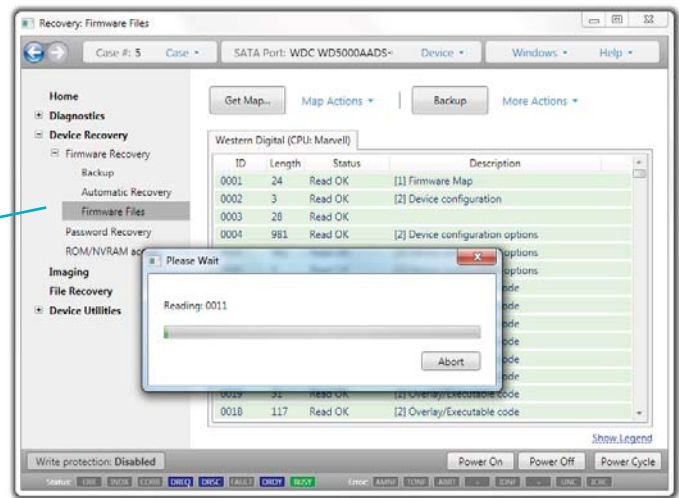
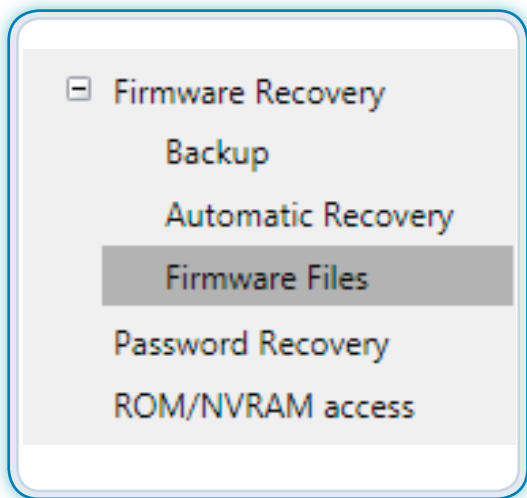


Identify and/or Remove unknown passwords regardless of setting (Master or User) or security level (High or Maximum).

Operation is fast, easy and automatic. Brute Force and Dictionary Attack are available when needed.



FIRMWARE RECOVERY



- Firmware Backup
- Firmware Editing
- Firmware Restoration
- Automatic Firmware Recovery
- Translation Table Recovery
- Universal Firmware Archive

Fully Automated Diagnosis

Automatically assesses firmware issues and repairs/recovers most common types of firmware damage. Backup and Restore functions can be executed with just one click of a button.

Firmware Backup & Restore

Atola Insight takes the pain out of backing up firmware modules by allowing the user to save all firmware modules and ROM/EEPROM/NVRAM images. This reliable and convenient feature is achieved with just two clicks of a mouse.

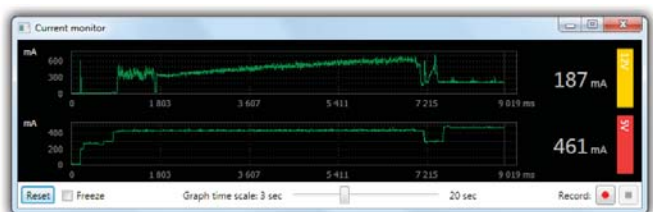
Firmware Editing Capability

Full access to ROM, EEPROM/NVRAM Firmware modules is implemented for the seasoned recovery professional. Read, write, modify and erase any firmware module or structure and switch a hard drive's internal flags and features.

Insight supports all firmware formats including PC300, Salvation Data and HRT



DISK UTILITIES



- Device Configuration
- Host Protected Area
- Security Features
- Media Recovery
- Create Bad Sectors
- Disk Editor
- Device Configuration
- Current Monitor (Oscilloscope)



Media Recovery

Extract data from damaged or unstable sectors to maximize recovered data.

Disk Editor

Allows the user to view or modify any hard drive sector.

DCO & HPA

Set, remove and adjust DCO and HPA settings for full hard drive access and control.

Current Monitor

The data collected by the current monitor is used for automatic hard drive diagnostics (to detect frozen motor, damaged electronics, etc). 5V and 12V currents are monitored separately.

Atola Insight also includes an oscilloscope that allows the operator to watch hard drive power consumption levels. There are two kinds of oscilloscope in Atola Insight: full-size monitor and tiny monitor. Tiny monitor can always stay on the screen allowing to always keep an eye on hard drive's power consumption, whereas full size monitor provides more details.



ATOLA DISKSENSE ETHERNET

Atola DiskSense is a Gigabit Ethernet hardware unit that maximizes the speed, flexibility and potential of the Atola Insight suite. It offers the following features:

Mobility:

Can be used on any computer equipped with an Ethernet port, allowing the user to perform on-site diagnosis or recovery. Standard 5/12v Molex DC connector is included to power the unit via PC power supply.

UDMA Data Transfer:

Enhances Atola Insight's functions by enabling the hard drive to run in UDMA transfer mode. Save time by increasing transfer speed.

Case Management:

Embedded SQL software provides simple and reliable case management for all jobs.

Current Monitor:

Protects the connected hard drive from short-circuits in conjunction with the Insight's Current Monitor/Oscilloscope. It also enhances the Insight's HDD diagnostic capabilities. 5v and 12v currents are monitored separately.

Power Control:

Provides full control over HDD power. It allows the user to terminate HDD power by pushing two buttons or instantly abort an operation entirely if necessary

RS232-C Port:

Equipped with an on-board RS232C (com) port for specialized tasks including accessing Seagate hard drives.



Please contact **Ji2 Inc** for further product information:



Ji2 Inc.

International Reseller & Distributor

11235 Knott Ave, Suite C

Cypress, CA 90630, USA

Phone: (562) 597-1482

Fax: (714) 895-7300

www.jharddrive.com