

# SHINOBI hard drive Test/Wipe Station

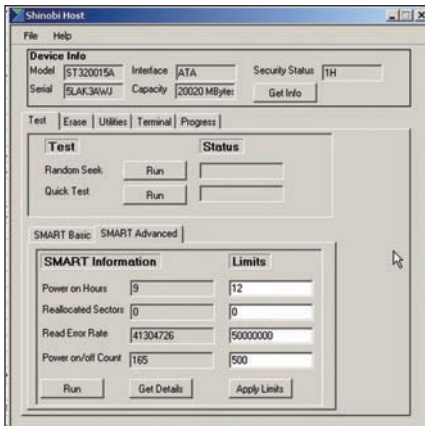


## | Summary |



The Shinobi Test/Wipe Station is a fast and efficient solution for hard drive QA testing, data security, recycling and recertification. It features a range of hard drive test and wipe/erase options packaged in a user-friendly hardware-software package. This product is ideal for quickly testing hard drives for re-use and wiping sensitive data for security measures. The Shinobi includes a range of options for minimizing process time or maximizing test accuracy and data security.

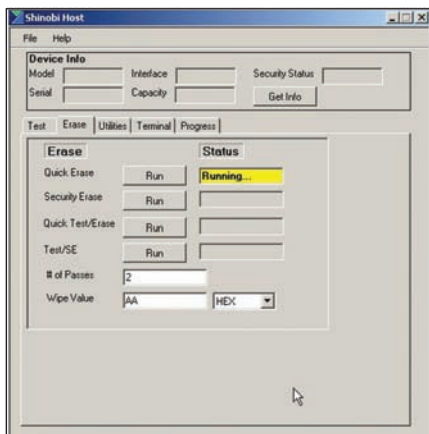
## | Features |



### Hard Drive Test:

Range of effective test functions that verify hard drive logical and physical integrity with Quick and Comprehensive options to meet any customer's needs.

- **Quick Test** (Based on hard drive mfg specs)
- **Q.A. Test** (Comprehensive HDD integrity verification)
- **Custom SMART Test** (Create custom test thresholds)
- **Random Seek Test** (Tests drive's mechanical integrity)
- **HDD Test + Wipe** (Combine any 2 Test & Wipe functions)

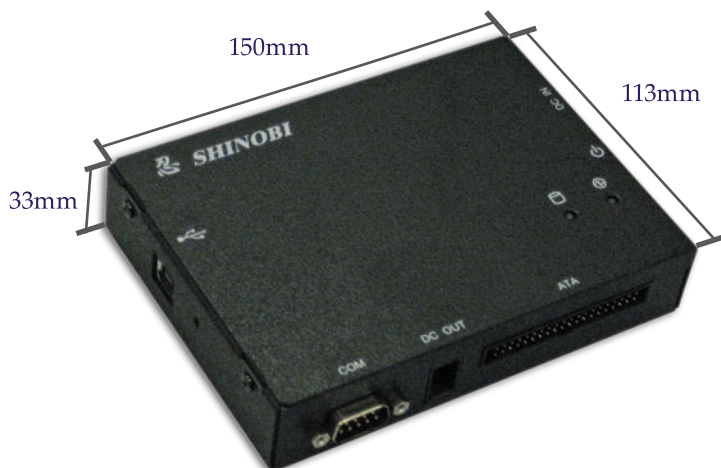


### Hard Drive Wipe/Erase:

Wipe the entire hard drive according to the official ATA Data Security standard or run the "Quick Wipe" function to erase the file tables in under 60 seconds. Any wipe function can be combined with any test function.

- **Quick Erase** (Wipe HDD file tables)
- **Data Security Erase** (Full wipe of all HDD sectors)
- **HDD Wipe + Test** (Combine any 2 Test & Wipe functions)

# SHINOBI hard drive Test/Wipe Station

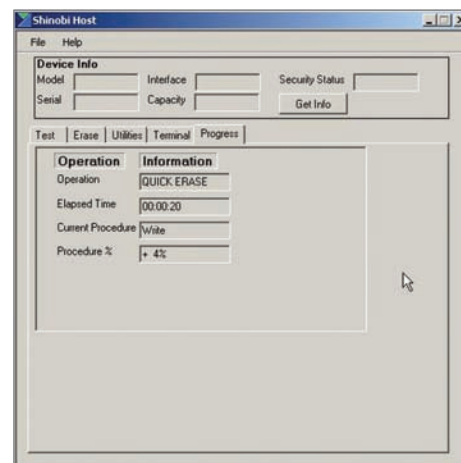
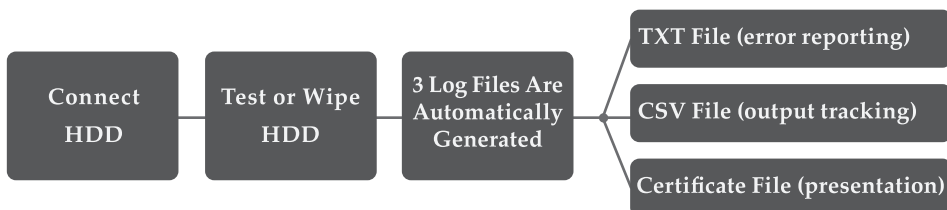


## Technical Specs

- Dimensions: ----- W150 X D113 X H33 (mm)
- Weight:----- Less than 1lb(440g)
- Energy Consumption:----- 1.4A max
- Interface: ----- ATA (IDE) x1  
----- Serial (RS-232) x1
- Host Interface:----- USB 2.0/1.1
- Power:----- AC 100v-240V 50/60 Hz

## Automated Reporting System

Automatically generate exportable log files with customizable certificates for each processed hard drive. Reporting system is designed to maximize process speed and efficiency.



(Function In Progress)

## Included Items

- Shinobi Unit
- User Manual
- A/C Cable
- Shinobi Host Software CD-ROM
- ATA Interface Cable
- HDD DC Power Cable
- USB Interface Cable

## Optional Cable/Adapter Pack

- SATA adapter
- 2.5" ATA adapter
- RS-232 Serial cable